

The VELUX logo is displayed in white, bold, sans-serif capital letters within a red rectangular box. The background of the entire page is a stylized American flag with stars and stripes.

Light and fresh air – all at the touch of a button – that 's what you get with VELUX home automation solutions based on io-homecontrol®. VELUX have more than 30 years experience in operating our skylights roof windows and blinds at the press of a button – and our solutions work quietly and effectively.

Because of power signal and connectivity differences, products sold in the US are designed to work only in the US. See warranty terms on www.veluxusa.com

SKYLIGHT

VSE Electric venting deck mounted skylight

Electric venting deck mounted skylights are ideal for new installation where comfort and frequent use is essential. Included in the package, the KLR 100 is a 2-way remote control that can operate up to 200 electrical io-homecontrol products. The display makes it possible to select and operate individual products, a group, or all products simultaneously.



VCE Electric venting curb mounted skylight

Electric venting curb mounted skylights are ideal for new installation where comfort and frequent use is essential. Included in the package, the KLR 100 is a 2-way remote control that can operate up to 200 electrical io-homecontrol products. The display makes it possible to select and operate individual products, a group, or all products simultaneously.



DISTRIBUTION ON THE US MARKET:

- By VELUX
- See installers and dealers locator on www.veluxusa.com



io-homecontrol® provides advanced and secure radio technology that is easy to install. io-homecontrol® labelled products communicate with each other, improving comfort, security and energy savings.

www.io-homecontrol.com

www.veluxusa.com
www.usa.io-homecontrol.com

The VELUX logo is displayed in white, bold, uppercase letters on a red rectangular background.

Light and fresh air – all at the touch of a button – that 's what you get with VELUX home automation solutions based on io-homecontrol®. VELUX have more than 30 years experience in operating our skylights roof windows and blinds at the press of a button – and our solutions work quietly and effectively.

Because of power signal and connectivity differences, products sold in the US are designed to work only in the US. See warranty terms on www.veluxusa.com

SKYLIGHT

VSS Solar powered deck mounted skylight

Solar Powered "Fresh Air" Skylights are ideal for renovation and replacement of manual skylights where comfort and easy wireless installation is important.

Included in the package, the KLR 100 is a 2-way remote control that can operate up to 200 electrical io-homecontrol products. The display makes it possible to select and operate individual products, a group, or all products simultaneously.



VCS Solar powered curb mounted skylight

Solar Powered "Fresh Air" Skylights are ideal for renovation and replacement of manual skylights where comfort and easy wireless installation is important.

Included in the package, the KLR 100 is a 2-way remote control that can operate up to 200 electrical io-homecontrol products. The display makes it possible to select and operate individual products, a group, or all products simultaneously.



DISTRIBUTION ON THE US MARKET:

- By VELUX
- See installers and dealers locator on www.veluxusa.com



io-homecontrol® provides advanced and secure radio technology that is easy to install. io-homecontrol® labelled products communicate with each other, improving comfort, security and energy savings.

www.io-homecontrol.com

www.veluxusa.com
www.usa.io-homecontrol.com

The VELUX logo is displayed in white, bold, sans-serif capital letters within a red rectangular box. The background of the entire page is a close-up, slightly blurred image of the American flag, showing the stars and stripes.

Light and fresh air – all at the touch of a button – that 's what you get with VELUX home automation solutions based on io-homecontrol®. VELUX have more than 30 years experience in operating our skylights roof windows and blinds at the press of a button – and our solutions work quietly and effectively.

Because of power signal and connectivity differences, products sold in the US are designed to work only in the US. See warranty terms on www.veluxusa.com

BLINDS

DMC, DMD, DMH Electrical blackout blinds

▼
The electrical blackout blind is for installation on VELUX skylights.
The blackout blind has the following functions: Blackout: 100% black-out, stepless positioning, improves insulation.



DSC, DSD, DSH Solar powered blackout blinds

▼
The solar powered blackout blind is for installation on VELUX skylights.
The blackout blind has the following functions: Blackout: 100% black-out, stepless positioning, improves insulation.



DISTRIBUTION ON THE US MARKET:

- By VELUX
- See installers and dealers locator on www.veluxusa.com



io-homecontrol® provides advanced and secure radio technology that is easy to install. io-homecontrol® labelled products communicate with each other, improving comfort, security and energy savings.

www.io-homecontrol.com

www.veluxusa.com
www.usa.io-homecontrol.com

The VELUX logo is displayed in white, bold, sans-serif capital letters within a red rectangular box. The background of the entire page is a close-up, slightly blurred image of the American flag, showing the stars and stripes.

Light and fresh air – all at the touch of a button – that 's what you get with VELUX home automation solutions based on io-homecontrol®. VELUX have more than 30 years experience in operating our skylights roof windows and blinds at the press of a button – and our solutions work quietly and effectively.

Because of power signal and connectivity differences, products sold in the US are designed to work only in the US. See warranty terms on www.veluxusa.com

BLINDS

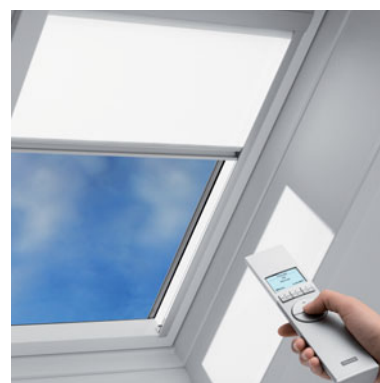
PMC, PMD, PMH Electrical venetian blinds

▼
The electrical venetian blind is for installation on VELUX skylights. The venetian blind has the following functions: Control of sunlight: Optimum light adjustment, cordless operation, control of direction and intensity of sunlight, privacy, decoration.



RMC, RMD, RMH Electrical light filtering blinds

▼
The electrical light filtering blind is for installation on VELUX skylights. The light filtering blind has the following functions: Regulation of light: Diffuses light, provides basic privacy and control of sunlight, decoration.



DISTRIBUTION ON THE US MARKET:

- By VELUX
- See installers and dealers locator on www.veluxusa.com



io-homecontrol® provides advanced and secure radio technology that is easy to install. io-homecontrol® labelled products communicate with each other, improving comfort, security and energy savings.

www.io-homecontrol.com

www.veluxusa.com
www.usa.io-homecontrol.com



VELUX®

Light and fresh air – all at the touch of a button – that 's what you get with VELUX home automation solutions based on io-homecontrol®. VELUX have more than 30 years experience in operating our skylights roof windows and blinds at the press of a button – and our solutions work quietly and effectively.

Because of power signal and connectivity differences, products sold in the US are designed to work only in the US. See warranty terms on www.veluxusa.com

BLINDS

RSC, RSD, RSH, Solar powered light filtering blinds

▼
The solar powered light filtering blind is for installation on VELUX skylights.
The light filtering blind has the following functions: Regulation of light:
Diffuses light, provides basic privacy and control of sunlight, decoration.



DISTRIBUTION ON THE US MARKET:

- By VELUX
- See installers and dealers locator on www.veluxusa.com



io-homecontrol® provides advanced and secure radio technology that is easy to install. io-homecontrol® labelled products communicate with each other, improving comfort, security and energy savings.

www.io-homecontrol.com

www.veluxusa.com
www.usa.io-homecontrol.com



Light and fresh air – all at the touch of a button – that 's what you get with VELUX home automation solutions based on io-homecontrol®. VELUX have more than 30 years experience in operating our skylights roof windows and blinds at the press of a button – and our solutions work quietly and effectively.

Because of power signal and connectivity differences, products sold in the US are designed to work only in the US. See warranty terms on www.veluxusa.com

CONTROL UNIT

KLC 500 Control unit

The KLC 500 control unit is used for operation of up to 5 electrical products of the same product type in VELUX skylights.

The products are operated via an io-homecontrol® activation control.

It can be used with VELUX skylights as well as decoration and sun screening products.



CONTROLS

KLI 110 Keypad

The KLI 110 keypad can be used for individual operation of one motor or simultaneous operation of several motors of the same product type using 1-way io-homecontrol® RF.

The installation is wireless and battery powered.



KLR 100 Remote control

The KLR 100 is a 2-way remote control that can operate up to 200 electrical io-homecontrol® products.

The display makes it possible to select and operate individual products, a group or all products simultaneously. Time programming is also available.



DISTRIBUTION ON THE US MARKET:

- By VELUX
- See installers and dealers locator on www.veluxusa.com



io-homecontrol® provides advanced and secure radio technology that is easy to install. io-homecontrol® labelled products communicate with each other, improving comfort, security and energy savings.

www.io-homecontrol.com

www.veluxusa.com
www.usa.io-homecontrol.com

The VELUX logo is displayed in white, bold, uppercase letters within a red rectangular box. The background of the top half of the page features a stylized American flag with stars and stripes.

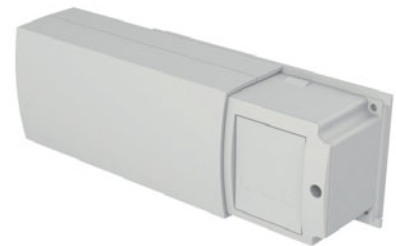
Light and fresh air – all at the touch of a button – that 's what you get with VELUX home automation solutions based on io-homecontrol®. VELUX have more than 30 years experience in operating our skylights roof windows and blinds at the press of a button – and our solutions work quietly and effectively.

Because of power signal and connectivity differences, products sold in the US are designed to work only in the US. See warranty terms on www.veluxusa.com

INTERFACE

KLF 100 Interface

▼
The KLF 100 interface is used when io-homecontrol® products are to be controlled by external control devices that are not io-homecontrol® compatible as e.g. external sensors or BUS systems. The interface can activate one product or a group of products of the same product type.



BATTERY BACKUP

KLB 100 Battery backup

▼
The KLB 100 battery backup can be used for electrical operated skylights. The battery backup ensures that skylights can be closed and blinds raised in case of power failure.



DISTRIBUTION ON THE US MARKET:

- By VELUX
- See installers and dealers locator on www.veluxusa.com



io-homecontrol® provides advanced and secure radio technology that is easy to install. io-homecontrol® labelled products communicate with each other, improving comfort, security and energy savings.

www.io-homecontrol.com

www.veluxusa.com
www.usa.io-homecontrol.com